



LAURA
KNIGHT
MYSTERY



FAREWELL
JONATHAN
HOLMES



SCULPTOR
ARNOLD
SNELL

ARTEFACT

The Newsletter of the Friends of Penlee House

Volume 4/Issue 1/March 2010

This spring, Penlee House is presenting an exhibition of work by two of the central figures of the later Newlyn School - Jill and Geoffrey Garnier.

Geoffrey Garnier was the only Newlyn artist to devote himself entirely to the art of print-making. Educated at Charterhouse and initially trained as an engineer, he took a post in Canada in 1907 but soon abandoned it to go prospecting for gold in the frozen north.

On his return to England, he studied at Bushey School of Art and in 1913 joined the Forbes School at Newlyn. By sheer coincidence, his cousin Jill Blyth arrived at the school in the same year. They were immediately attracted to each other and became a popular couple with their fellow artists.

The guest list at Geoffrey's parties, given in his studio at Stanhope Forbes' former home, read like a Who's Who in Art: Lamorna Birch, Laura and Harold Knight, Charles and Ruth Simpson, Harold Harvey, his wife Gertrude and her beautiful sister Sophie Bodinnar, Frank Dobson the sculptor, Dod and Ernest Procter and Alfred Munnings and his wife Florence.

Geoffrey and Jill married in 1917, at which time he was serving in the



Geoffrey Garnier, *St Mary's Church, Penzance*, Lithograph, Private collection

Navy, but after the War, they settled in Newlyn, where they remained for the rest of their lives. They bought Orchard Cottage, high above the harbour with glorious views across the bay to St Michael's Mount, and built a studio each in the steeply sloping garden.

Geoffrey soon gained international recognition for his prints. He worked in dry-point, line engraving, etching, mezzotint and particularly aquatint, developing new processes and rediscovering old methods. Favourite subjects were the sailing ships of the great era of British sea power, but he also produced Cornish landscapes and sporting scenes, as well as charming studies of children at play and colourful oriental prints.

Unlike the artist wives of some of her contemporaries, Jill continued to paint despite the demands of domesticity, and produced portraits of her children and friends, landscapes and still lives, making a record of her times.

Geoffrey's versatility extended to calligraphy, bookbinding and the writing of fiction. He kept a boat in the harbour and was close to the fishing community of the village. When its old cottages were threatened with 'slum clearance', he took a leading part in the campaign to save them, culminating in the petition delivered to parliament by the fishing boat *Rosebud*. Although most of his work looks back to the past or celebrates what was unchanging in Cornish life, he had a love of fast cars, and the garage at Orchard Cottage housed at various times such exotic makes as Benz, Delage and Austro-Daimler.

This exhibition looks at both Geoffrey and Jill's work in the context of many of their artist friends, including Birch, Munnings, the Knights, the Procters, Harvey and Weatherby. It runs from 20 March to 22 May and is accompanied by a new illustrated book, written by John Branfield and published by Sansom & Co., available from Penlee House shop.

the FRIENDS of

PENLEE HOUSE



Gallery & Museum

ARTEFACT is published three times a year by and on behalf of the Friends of Penlee House. All correspondence should be directed to:

Richard Clement, Editor, ARTEFACT,
Penlee House, Morrab Road,
Penzance, Cornwall TR18 4HE
Tel 01736 363625
email: artefact@penleehouse.org.uk

ARNOLD SNELL, SCULPTOR as pictured by Harry Penhaul

As a lad I walked down a long Nor'ard Slip from Newlyn Town to Street an Nowan and just before Keel Alley passed the workshop of William Arnold Snell, Sculptor and Monumental Mason. It was with deep fascination that I gazed upon the sculpture of the dog in the workshop window, as it lay gazing out over the harbour.

While looking through the Penhaul Collection in the Penlee Photographic Archive, I came across two photographs, the first of which records the unveiling of the plaque on the wall of the Royal National Mission to Deep Sea fishermen in Newlyn commemorating the epic voyage to Australia of the fishing lugger *Mystery*; the plaque is the work of Arnold Snell.



Other examples of his skill and craft include the War Memorials in Penzance, Newlyn and Mousehole; the Macgregor Memorial, and the commemorative plaque for William Lovell on the wall of the Smugglers Restaurant in Newlyn Town.

Examples of his wood carving include the pulpit at the Parish Church of St Pol de Leon, in the village of Paul, near Mousehole. Harry Penhaul's photographs pay tribute to a highly gifted member of the Arts and Crafts Movement in Newlyn. Copies of these photographs and many others are available from the Photographic Archive in Penlee House.

John S. Wallis, photograph collections volunteer

*References for this article were taken from:
Arts and Crafts in Newlyn 1890 – 1930; Hazel Berryman;
Published by Newlyn Orion, Newlyn Art Gallery, May 1986*



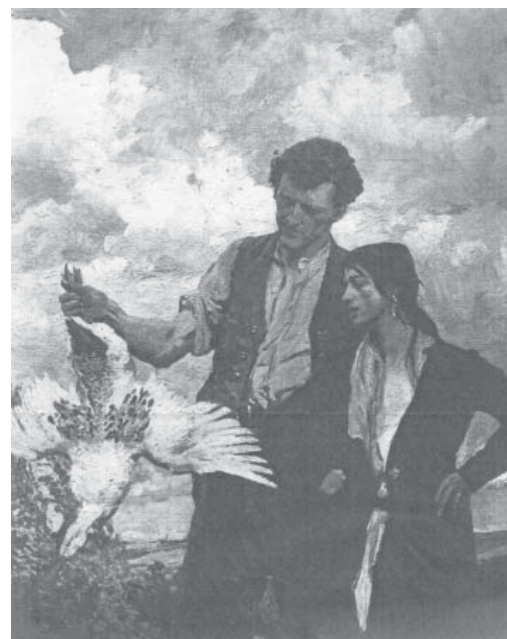
LAURA KNIGHT MYSTERY?

The triangular portion of an oil on canvas painting (pictured above) by Dame Laura Knight was found pinned to beams as a draught excluder when the owner was modernising their house. The complete painting would have measured about five feet square. Thirty-two years later a photograph of the complete painting (pictured below) was found in the Witt Library. The implication is that the complete painting was at least exhibited, and probably sold.

The painting was completed in about 1912 or 1913, shortly after Laura Knight moved into Oakhill, near Lamorna. It is assumed that the subjects are Laura Knight's gardener and his wife, Mr. and Mrs. Ernest, as documented in her autobiography *'Oil Paint and Grease Paint'* Chapter XVI 'Tramps', pages 194 and 195.

The mystery to be solved includes the purchaser of the painting; the reason for the painting returning to Cornwall; why it was cut in half, and the location of the other half of the painting.

Can any of the Friends help? If you can, please let us know on 01736 363625 or info@penleehouse.org.uk



ART WORKSHOPS FOR ADULTS

Inspired by the response from our Penlee Inspired exhibition, Penlee House will be offering several new adult art courses at different levels, for all you budding artists out there!

INSIDES AND EDGES

Penlee Printmaking Weekend with Diane Spiers

A two day course in collagraph and monoprint technique running from 10-4pm, Saturday 27 and Sunday 28 March. The cost is £60 for two days, including materials.

Diane Spiers studied fine art at Glasgow School of Art, and Printmaking at Morley College, London. She runs regular art and craft workshops and courses in Cornwall. Diane says "Penlee has a fantastic heritage collection to draw on and the lessons we can learn from the Newlyn and Lamorna master artists are invaluable. Printmaking, particularly intaglio, is a responsive and inspiring medium to work in, and you'll be amazed at what you can achieve in just two days. Why not come and have a go at creating your own masterpiece?" Both beginners and experienced are welcome.

The course will be held in Penlee Coach House, Penlee Park. Booking is essential: to reserve your place, please call Penlee House on 01736 363625.

DO YOU HAVE THE GIFT OF THE GAB?

Are you someone who thrives in front of an audience? Do you have a passion for Newlyn School paintings - or any other subject linked to Penlee House's exhibitions or collections - you'd love to share with others?

Penlee staff are often invited to give talks to community groups, but it is difficult for so few staff to meet the ever-increasing demand. We're looking to recruit a small team of speakers who might go and give talks on our behalf.

All the necessary information and equipment will be provided, and expenses will be paid - all we are looking for is good communication skills and a willingness to promote Penlee House in this way. Anyone interested is asked to contact our Director, Alison Bevan, on 01736 363625, and you'll be invited along to a meeting to explain all.



A FOND FAREWELL

Friends will be sad to know that Jonathan Holmes, Penlee House's longest serving member of staff, will shortly be taking early retirement from the Gallery on ill health grounds. Following a major heart attack, Jonathan had a full heart transplant in August 2000, and has done exceptionally well to keep working until now.

Jonathan was originally appointed on 13 May 1986 as Museum Officer at what was then Penzance and District Museum, and in that role he initiated the refurbishment of the building that made it what it is today. During his 24 years here, he has taken on various roles, including Acting Director following Hazel Burston's tragic death, and for the last seven years he has been the Gallery's Access and Outreach Officer. Well known for his excellent talks on various subjects and also for his keen sense of humour, Jonathan will be missed by colleagues and Friends alike, and we wish him a long and happy retirement.

Having been off sick since August 2009, Jonathan will not be returning to work and will formally end his employment in a month or two. His colleagues are planning to have a leaving party for him, probably in April or May, and if any Friends wish to come along to this or to send him a personal good-will message, please contact Sandra Paternotte on 01736 363625.



CHECK OUT OUR NEW WEBSITE!

Just before Christmas last year, Penlee House's new website was launched, following a complete redesign by Creative Edge of Truro.

The new website was funded by the Heritage Lottery as part of the project to refurbish the Social History gallery and make our collections more accessible.

As well as looking better than before, the site now contains much more information, including a complete database of the collections, which you can search by typing a keyword into the 'Search' box. Of course, nothing beats seeing the paintings for real, but we hope you'll enjoy also being able to view them from the comfort of your own home.

If you haven't already been on to the site, do have a look at it - the address is www.penleehouse.org.uk - and please do let us have your thoughts.

FRIENDS' CONSTITUTION REVISED.

The original constitution of the Friends was written in November 1990 and since then has been amended eight times, the most recent occasion being at the last AGM in June 2009.

As a registered charity we have an obligation to comply with current charity legislation. In recent years there have been several changes in the law and it became clear when preparing the constitutional amendments to be presented to the last AGM, that a wider review of our constitution was required.

Since there are no changes to the objects, provision for changing the constitution, or for the dissolution of the Friends (all of which would need prior written permission from the Charity Commission), we have the power to approve the new draft constitution by a majority of two thirds of those present at our next AGM.

The original constitution contained fourteen clauses and was four and a half pages long; the new draft revised constitution contains sixteen clauses and is five and a half pages long. The chief changes relate to the duties and statutory role of the Trustees in relation to the work of the committee, although there are numerous other detailed amendments.

A copy of the revised Constitution, approved by the Friends' Committee, will be forwarded to you with the AGM Papers in May. Please have a good look at it in advance of the AGM.

DID YOU KNOW ?

You can increase the value of your subscription to the Friends by 25% at no extra cost to yourself? If you are a UK tax payer, simply by completing a Gift Aid Declaration form ONCE only, you can enhance the value of your subscription to the Friends by a quarter, for FREE!!!

A Gift Aid Declaration form is enclosed with this ARTeFACT. If you are a tax payer **and have not completed one of these in the past**, please deliver or post your completed form to Penlee House.

BAfM UPDATE

The British Association of Friends of Museums (BAfM) South West Conference will be held on 9 September 2010 at the Museum of Bath at Work. Details have yet to be finalised, so if there are any topics you would like discussed please let the Editor know.

The BAfM National Conference will be held between 24 and 26 September 2010 in the Isle of Man. Full details and a booking form will be enclosed in the Spring issue of the BAfM Journal and on the BAfM website. A copy can be obtained from the Artefact Editor, Richard Clement, c/o Penlee House.

FRIENDS TO MEET FRIENDS

The first Coffee Morning of the year will be hosted by Friends' Vice Chairman, Richard Clement, and his wife Pauline on Wednesday 5 May, 10.30 until 12.30. This will take place at their rural barn conversion and landscaped garden located at Kerris Vean, near Lamorna, offering countryside views toward Lamorna and Frank Gascoigne Heath's house, Menwinnion - all for £1.50. Book early!

The second Coffee Morning provides another chance to visit Wheal Betsy, the unique former home of Newlyn painter Thomas Cooper Gotch, set above the town with panoramic views over Mount's Bay. Your hosts will be Friends' Secretary Ron Hogg, and Pam Lomax. The date is Saturday 24 July, and the time, as before, 10.30 till 12.30, and the cost £1.50. Again, please book early as numbers are limited.

To book, or enquire, or even to offer to be a host yourself - please ring Janeve Bainbridge on 01736 753720.

Advertisement feature:

TRUST A FRIEND TO LOOK AFTER YOUR MOST PRIZED POSSESSIONS

As a Friend of Penlee House, you clearly care about protecting Cornwall's artistic heritage. As fellow Friends ourselves, we naturally share your enthusiasm and your commitment. And when it comes to insuring your own valuables, we're on-hand to give you expert, independent advice.

With head offices in Plymouth and roots deep in the local community, WPS Insurance Brokers & Risk Services is perfectly situated to provide you with a first-class personal service.

We strongly believe in building face-to-face relationships – in taking time to know your exact requirements, and in constructing tailored, highly competitive quotations. We're highly experienced in providing specialist household insurance for heritage listed buildings throughout the South West, and can arrange cover specifically designed to fit your circumstances – at premiums which offer better value than most 'off the shelf' policies.

What's more we pride ourselves on promptness and efficiency – and should you ever need to make a claim, we'll help and support you all the way. (It's not for nothing that we hold the Insurance Times Regional Broker of the Year Award.)

Trust a friend to fully understand your needs. Call Andy Cotter on 01752 675482 for more information or to arrange a free consultation with one of our specialists. We're looking forward to looking after you.

WPS Insurance brokers & Risk Services Ltd is authorised and regulated by the Financial Services Authority No. 306719. Registered in England No. 1022632.

PRESIDENT'S SUMMER BUFFET LUNCH

On Saturday 5 June, our President, Mrs Elizabeth Bolitho, will be hosting a Summer Buffet Lunch, commencing at 12.30, at her lovely house and garden, Hendra, near Tremethick Cross.

Open exclusively to members of the Friends, the ticket price of £12.50 will go towards furthering the purchasing power of Penlee House Gallery & Museum to add to its collection. Numbers are very limited for this event, so book early by ringing Janeve Bainbridge on 01736 753720.